

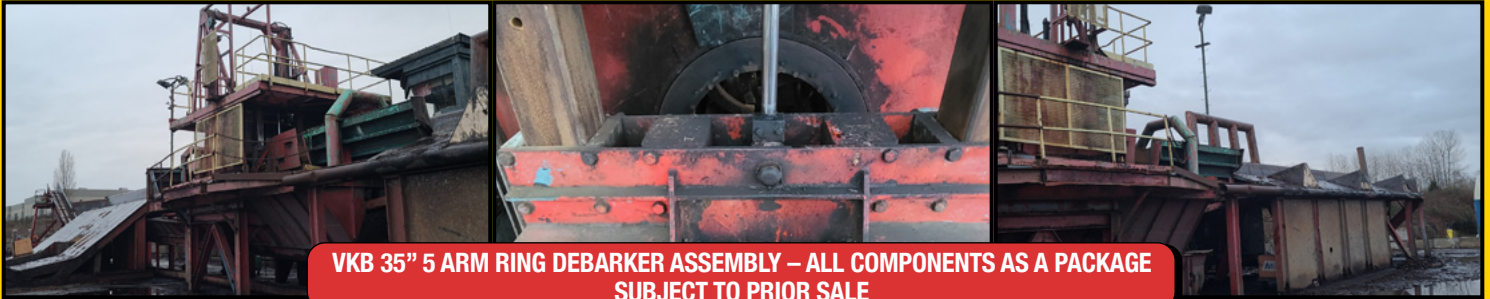
**ON-LINE
CLOSEOUT**

AUCTION

**PACIFIC CUSTOM
LOG SORTING LTD.**

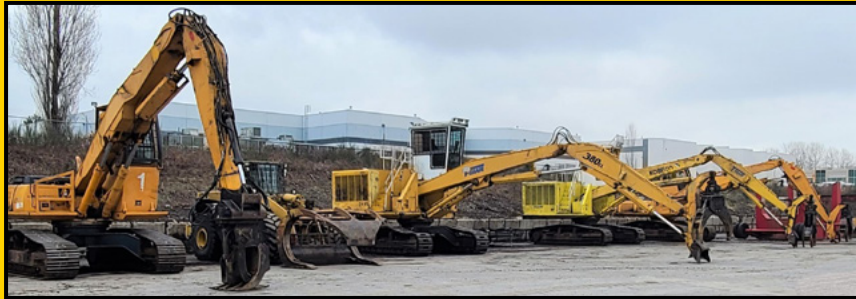


FIRST LOT BEGINS CLOSING: WED., FEB. 23RD - 10 AM
PLACE: 1950 BRIGANTINE DR., COQUITLAM, BC • PREVIEW: TUES., FEB. 22ND - 9AM - 4PM



**VKB 35" 5 ARM RING DEBARKER ASSEMBLY – ALL COMPONENTS AS A PACKAGE
SUBJECT TO PRIOR SALE**

**ALL MOBILE
EQUIPMENT WAS
REGULARLY SERVICED
AS FOLLOWS:
KOBELCO LOADERS -
EVERY 500 HRS.
ALL OTHERS AT 250-
300 HRS.**



6 LOG LOADERS

**ALL MOBILE
EQUIPMENT AND
DEBARKERS WERE IN
REGULAR SERVICE UP
TO SHUT DOWN. BARGE
LANDING AVAILABLE
FOR LOADOUT.**

LOG DEBARKER: (SUBJECT TO PRIOR SALE)-VKB 35" 5 arm, 575V, with 50' I/F & O/F, waste conveyors, control booth, 25hp screw comp., twin drive hyd. pump unit, electric(575v), drives & framework, spare parts **ROSSER HEAD DEBARKER:** Port. on T/A carrier, 75hp/575v main motor, 575v other drives **LOG LOADERS:** 2009 Hitachi ZX290F-3, S/N 290001, Meter reads 20819 (2783 on replaced engine - Isuzu 4 cyl. Diesel), WBM grapple; **Kobelco** SK370V1, S/N YC06U0308, Meter reads 23927 hrs., Mitsubishi 6D16 diesel, TMar 48" HD grapple; **Kobelco** Mod. SK370V1, S/N YC06U0307, Meter reads 30,943 hrs., Mitsubishi 6D16 diesel, TMar grapple; 1997 Hyundai Robex 290F-3, S/N 703GJ10004, Cummins 6 cyl.C Series diesel, Barko 48" grapple, Approx. 35,000hrs. (Approx. 15,000 hrs. on replaced engine); **Hyundai** Robex 290F-3, S/N 703GK10007, Cummins 6 cyl. C-Series diesel, IMAC HX40 power grapple (Rotex bearing changed approx. 2 yrs. ago); **Kobelco** SK300LL, S/N YC01049, Mitsubishi 6D22TC diesel, IMAC grapple, Meter reads 1366.73 hrs (Total hrs. NA) **WHEEL LOADERS:** 2008 Cat 980H, S/N CAT0980HLJMS02932, Meter reads 29,836, WB grapple (Engine & trans rebuilt less than 1 yr. ago - cost \$100,000, pins on grapple replaced); 1998 Cat 980G S/N 2KR02438, WB grapple, Meter reads 42,008 hrs.; **Cat** 980G S/N 2KR03441, Meter reads 8308hrs. (Est. 40,000 hrs.), Finning/WB grapple (main hyd. pum p changed under 100 hrs. ago); 1995 Cat 966F S/N N1SL01288, IMAC grapple, Meter reads 29,836 (engine replaced at 29,400 hrs.) **BOOM BOATS:** W.C. Manley Sidewinder 15', 471 Detroit diesel with Hydro drive; W.C. Manley Sidewinder 13', 453 Detroit diesel with Olympic drive **BOOM LIFT:** Marklift 42, telescope boom, Wisconsin gas engine; **UTILITY VEHICLE:** Kubota RIV900, diesel, 4 x 4, meter reads 5437 hrs.; **YARD EQUIPMENT:** 8 sets of steel sizing bunks, 60' x 5 run log haul w/ tank float; pair of push-off log bunks, 2 sorting bunks, dryland loader sweeper attachment, approx. 6 sets of crimper guns, wire bundle racks etc. **PARTS:** Hyd. cyl's., new heel rack, 2 Kobelco 370 booms, assorted parts in shop - Cat, Hyd. fittings, fasteners etc. etc.

PCLS MAINTENANCE SCHEDULE - All mobile equipment was serviced at 250-300 hrs., Kobelco's 500 hrs.

VISIT www.joinersales.com FOR MORE PHOTOS & INFORMATION

TERMS OF SALE: 18% BUYERS PREMIUM APPLIES. **PAYMENT:** Full payment by day following sale by cash, debit, bank draft, bank wire transfer (credit cards - Visa, M/C - accepted not exceeding \$2000 on entire purchase). **REMOVAL:** Final removal by Mon., Feb. 28th, 2022 - (minor exceptions on barge load-outs by approval only and on ring debarker) **ON-LINE SALE ONLY - LIVE WEBCAST - NO ON-SITE BIDDING**

Joiner
SALES CORP
CONDUCTING
AUCTIONS & APPRAISALS
NATIONWIDE

HEAD OFFICE:

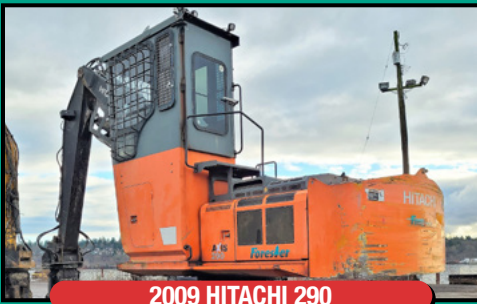
#103A - 31120 Peardonville Rd.
Abbotsford, B.C. V2T 6K7
Phone: (604) 852-8711
Fax: (604) 852-8721

Website: www.joinersales.com

ALBERTA:

#202 - 11830 111 Ave.
Edmonton, AB T5G 0E1
Phone: (780) 424-6230
Fax: (780) 489-2525

**INDUSTRIAL
AUCTIONEERS
MACHINERY
APPRAISERS**



2009 HITACHI 290



KOBELCO 370



KOBELCO 370



1997 HYUNDAI 290F-3



HYUNDAI 290F-3



KOBELCO SK300LL



3 OF 4 CAT LOADERS



2008 CAT 980H



1998 CAT 980G



CAT 980G



1995 CAT 966F



1 OF 2 SIDEWINDERS



MARKLIFT BOOM LIFT



SIZING BUNKS



1 OF 2 HOSE PRESSES

UNABLE TO ATTEND? Bid from your office in real time via the internet.
BidSpotter.com
Live Interactive Auction Webcasts
Register at www.bidspotter.com

SELLING OUT? SURPLUS EQUIP? NEED AN APPRAISAL?
WE CAN HELP! 604-308-8040
Connecting buyers & sellers since 1976 !